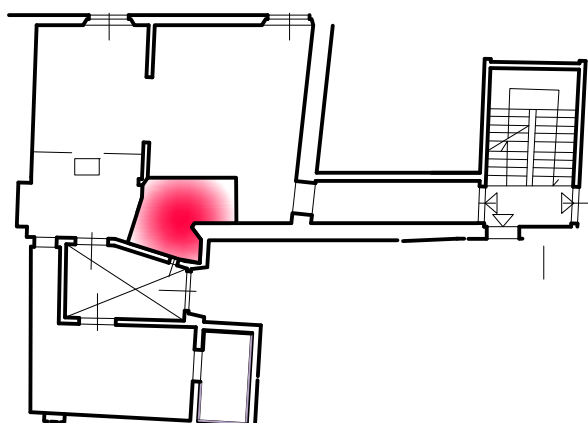
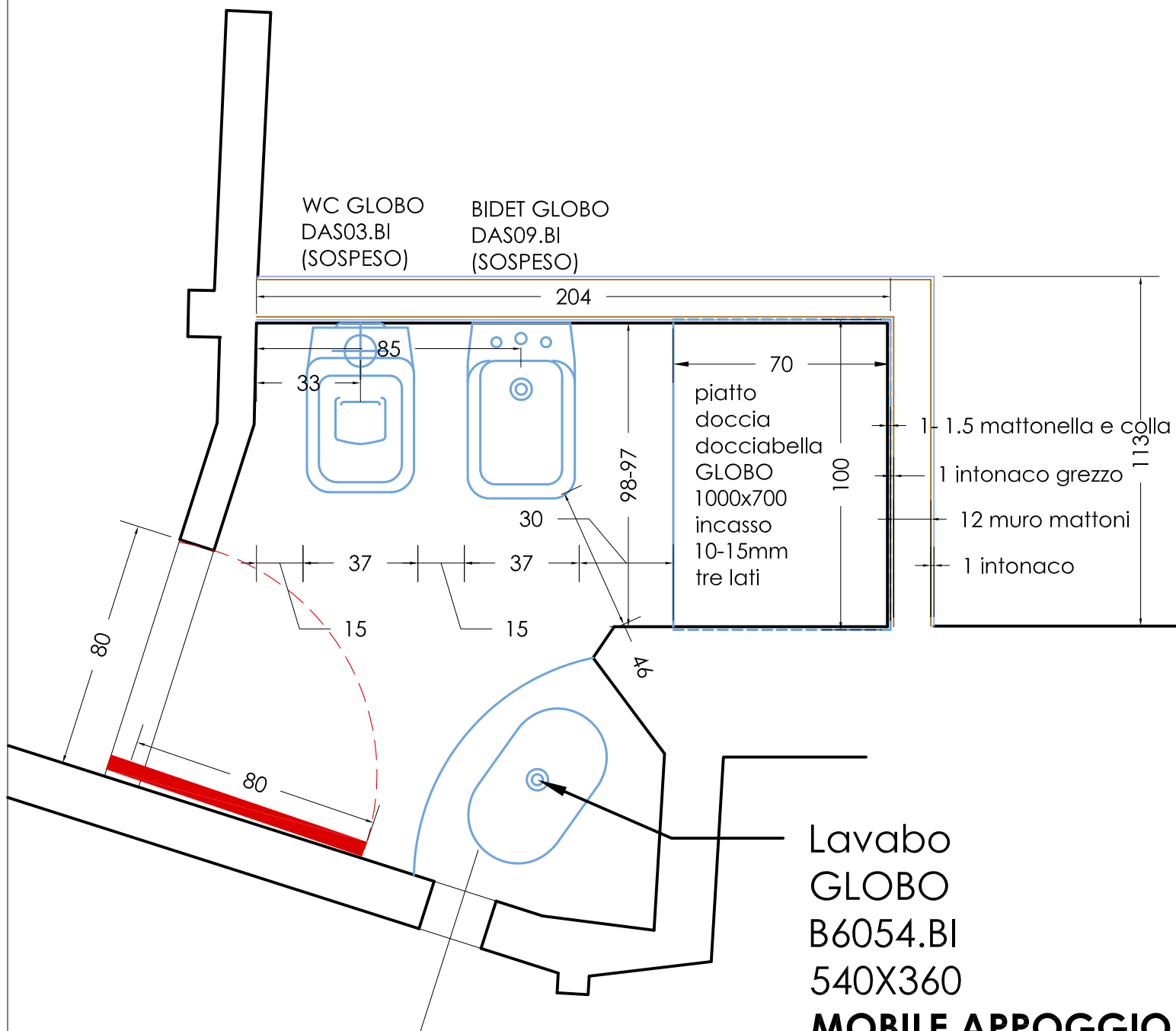


the ladder is near the ceiling when it is closed. A pulley with a rope allows you to get it down to go up to the terrace.

the wooden steps (same color as the ceiling) are open in the vertical part. so much light from the window passes through the steps



Via Fiesolana
Esecutivo **bagno principale**
rev.01 - 24.10.2018

Alfonso Della Croce Architetto
Piazzale Donatello 36, 50132 Firenze
Tel. +39 055 3860075 - Fax.+39 055 5274387
Mailto: info@dellacroce.com
338 560 57 80